

2024

# KANSAS CLAY

RECEPTION,  
Friday, February 23rd,  
6:00 ~ 8:00p.m.

OPENING FEBRUARY 12TH

KANSAS  
CLAY

PRESENTING ARTISTS:

*Kansas University  
Kansas State University  
Wichita State University  
Fort Hays State University*





*Nature is there no such thing*

Rose Schreiber  
University of Kansas  
Ceramic, glaze, sand  
28"H x 42"W x 20"D

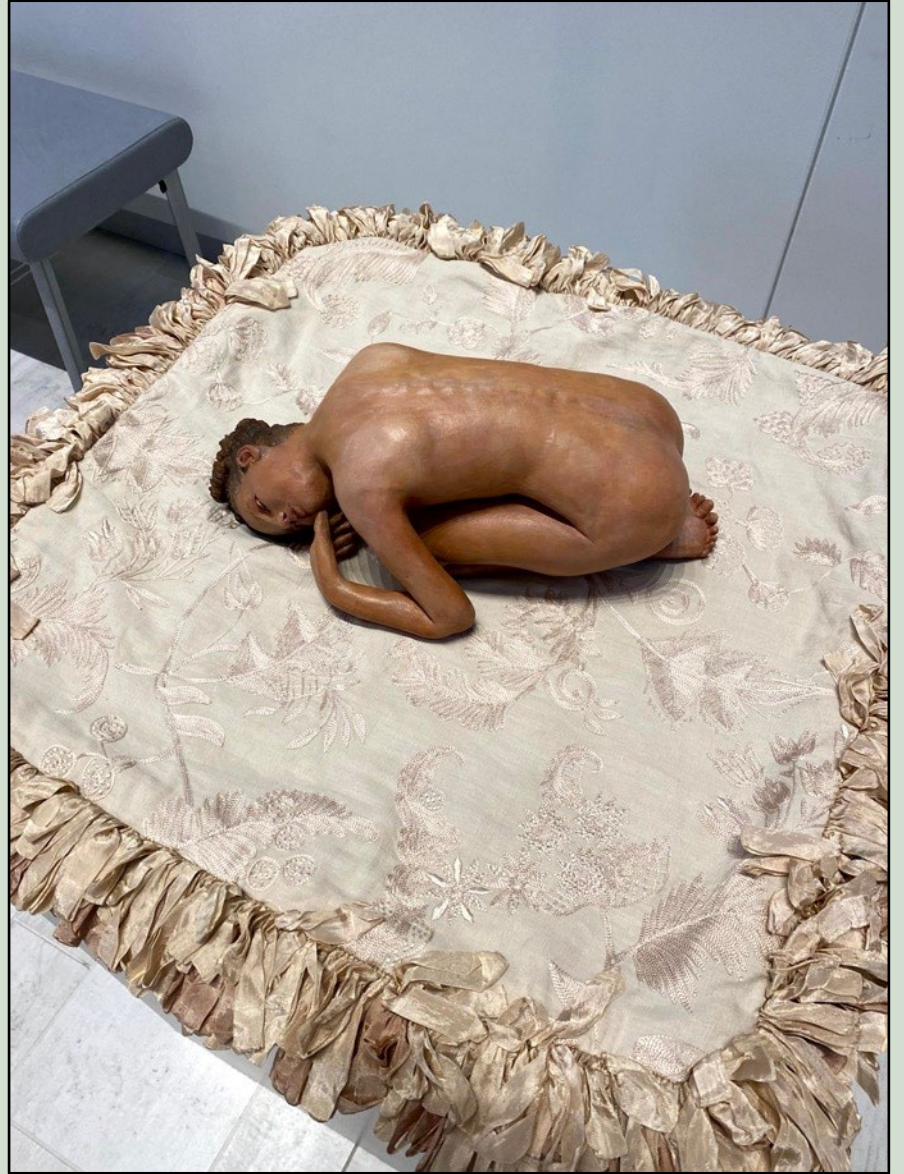


Small white label with illegible text, likely providing information about the artwork.



## ***Seed Sister***

Linda Ganstrom  
Fort Hays State University  
Stoneware painted with Gold Fluid  
Acrylic Washes seated on silk textiles







***Synthesis 72.8***

Casey Stueber, Adjunct Faculty  
Wichita State University  
Black Stoneware  
2024

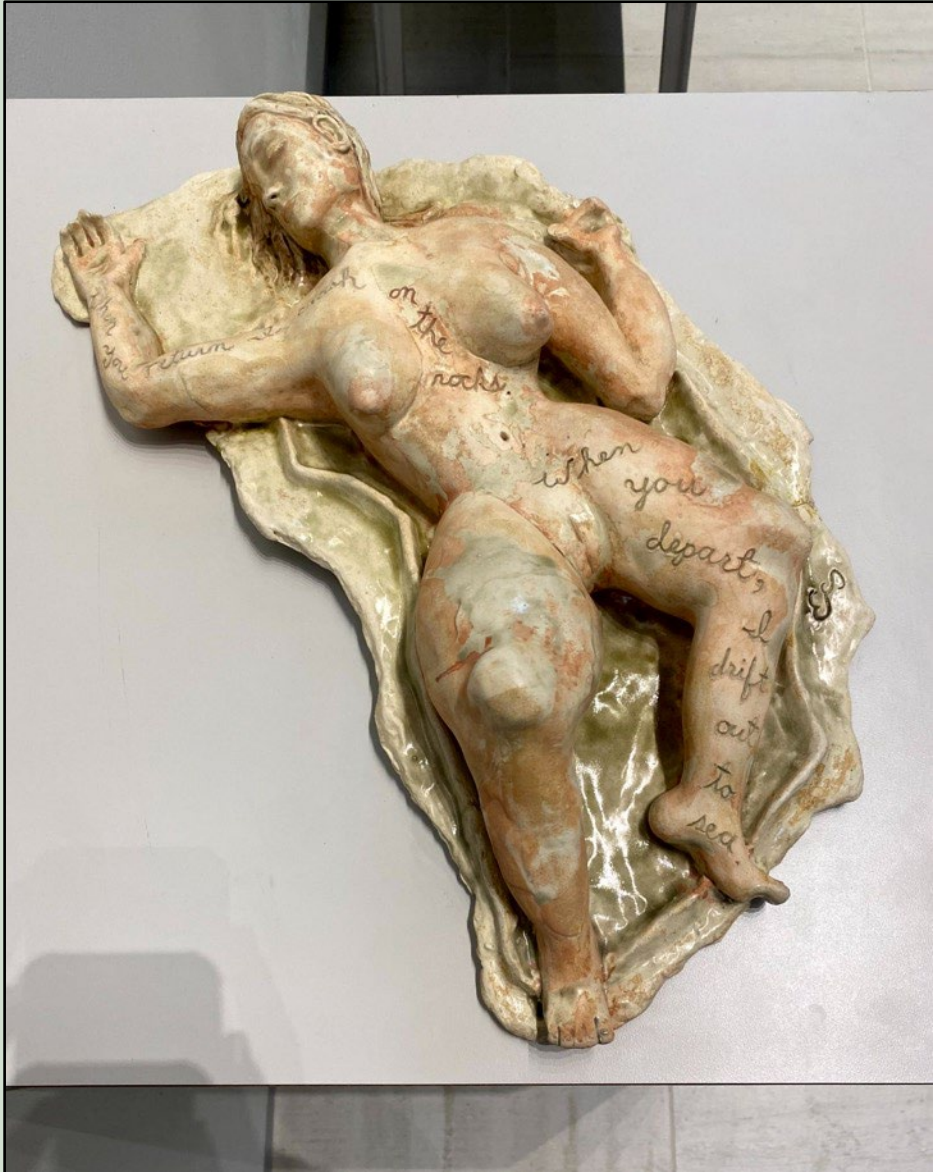




*Frame of Mind*

Mollykate Geddis  
Wichita State University  
Porcelain and velvet yarn  
12.5 x 12.5 x .75  
2023





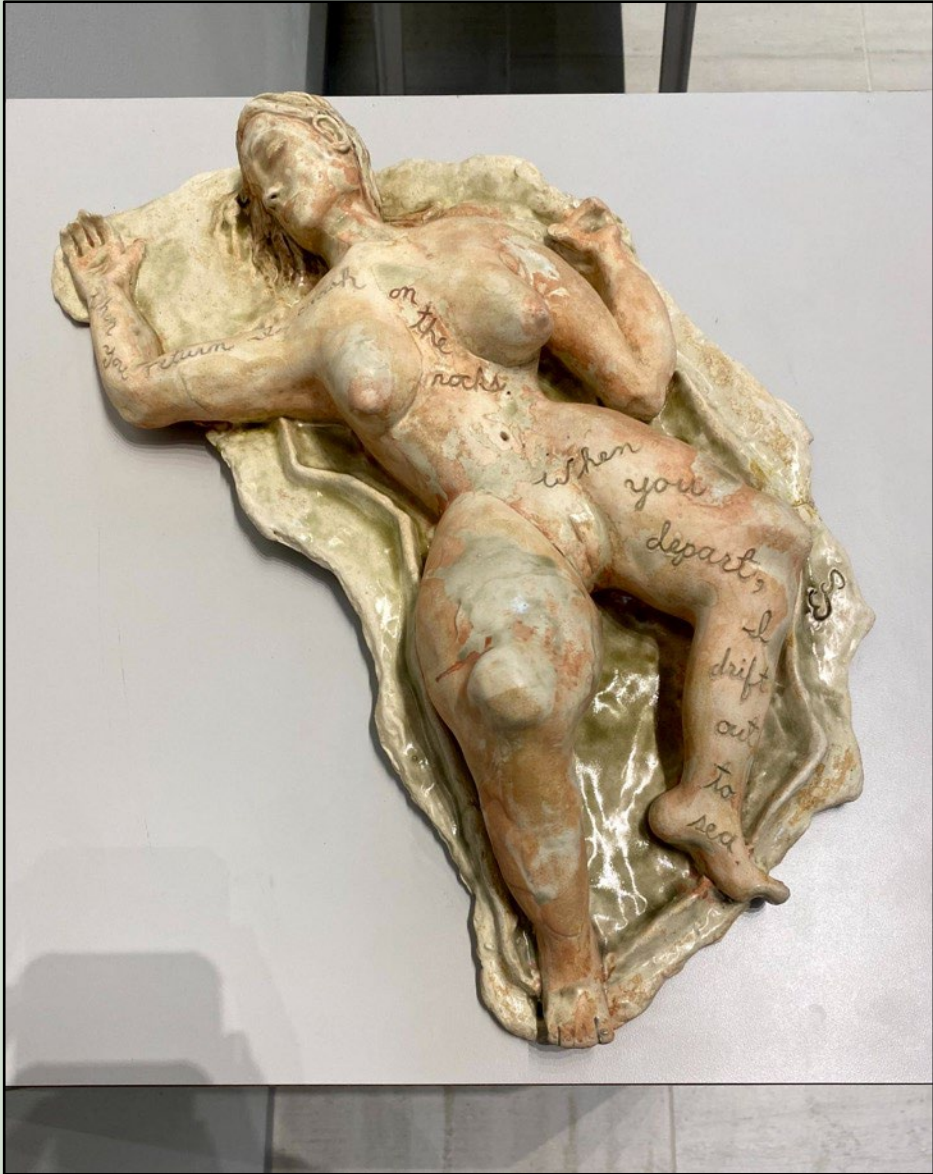
## ***When You Return***

Dayna Ball

Fort Hays State University

Porcelain paperclay, glaze, paint

16" x 9" x 4"









## ***The Drive Home***

Meredith Smith

University of Kansas

Ceramic, glaze, nichrome wire, cold finish

17.5" x 15.5" x 15.5"

**The Drive Home**  
Meredith Smith  
University of Kansas  
Ceramic, glaze, nichrome wire,  
cold finish  
17.5" x 15.5" x 15.5"  
1995







## ***Flashback Series***

Taylor Craig  
Fort Hays State University  
Colored slips, stains, underglaze, stoneware







***Dark Luck***

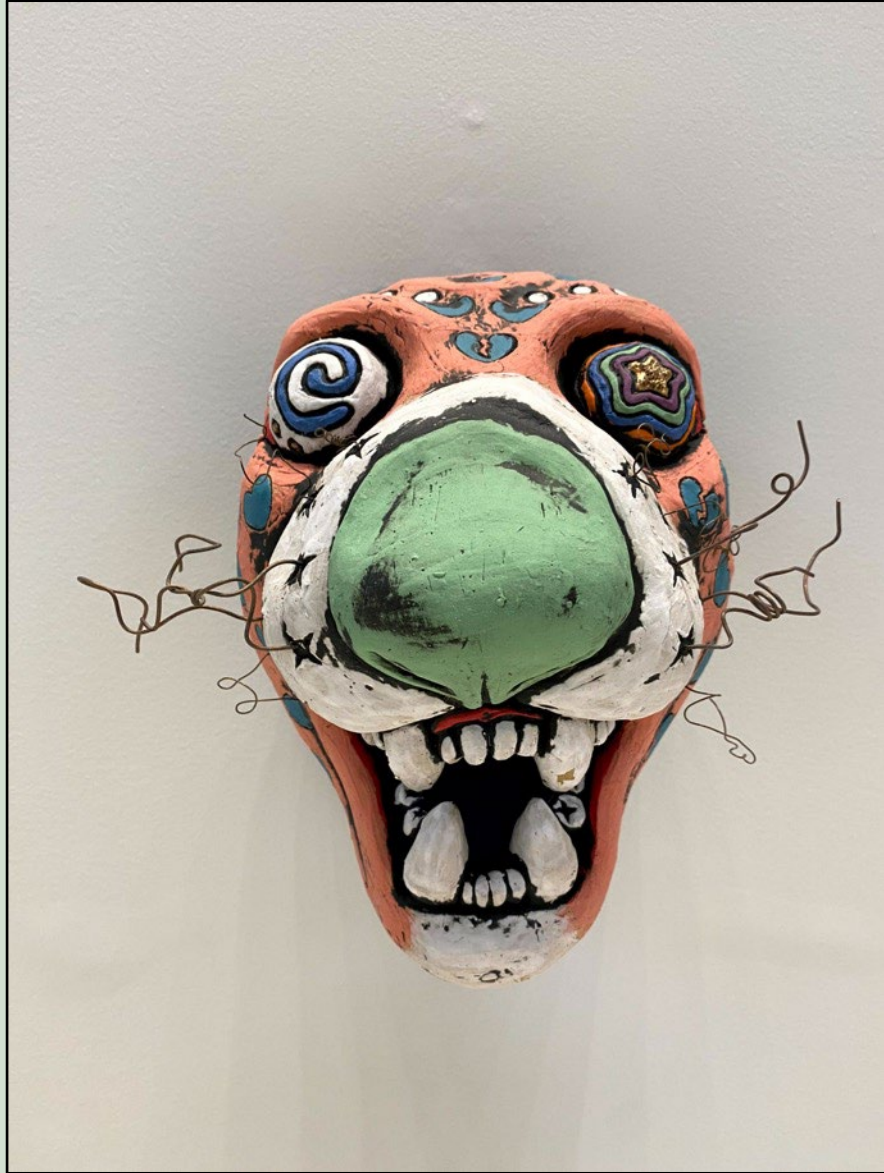
Kansas State University  
White Stoneware, Underglaze  
2023

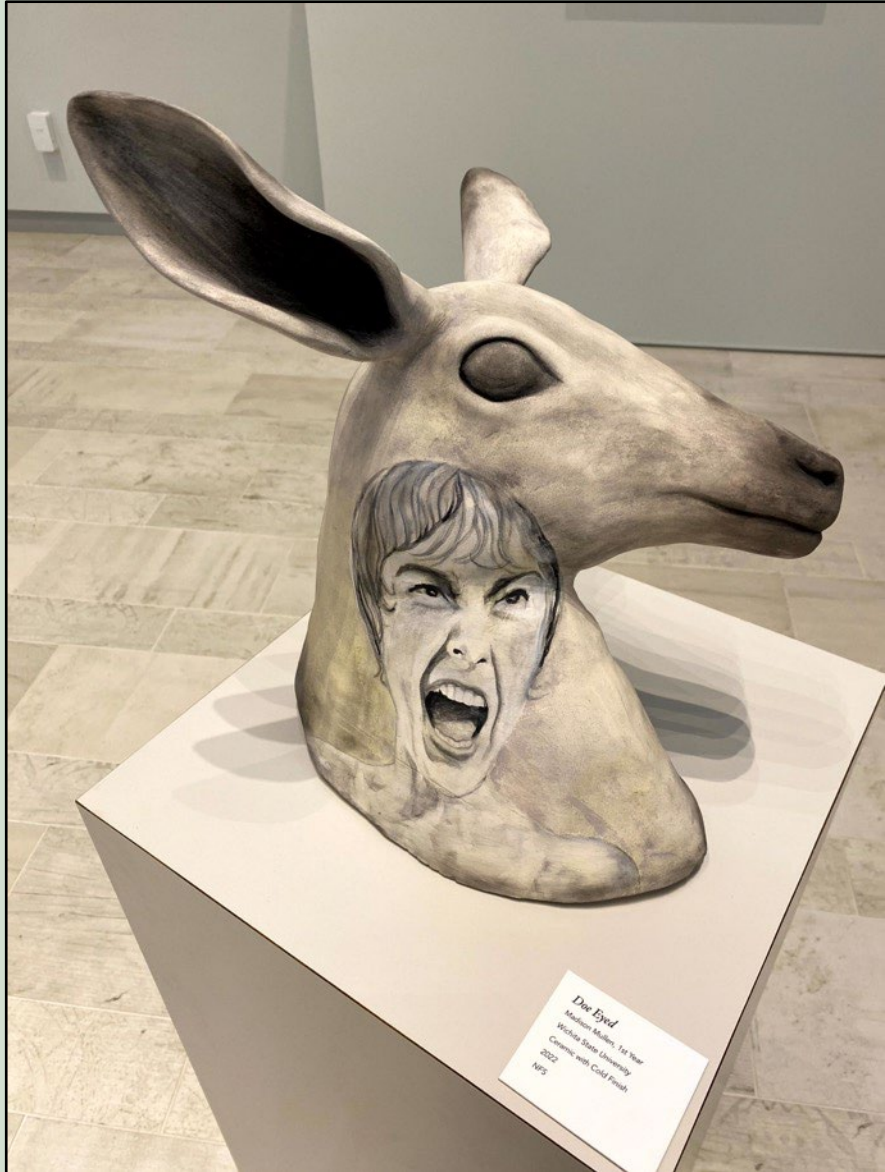




***Bermuda***

Branden Lawless  
Wichita State University  
Ceramic  
10.5" x 9.5" x 10"  
2023





## ***Doe Eyed***

Madison Mullen  
Wichita State University  
Ceramic with a cold finish  
13" x 13" x 14"  
2023









## *Waiting*

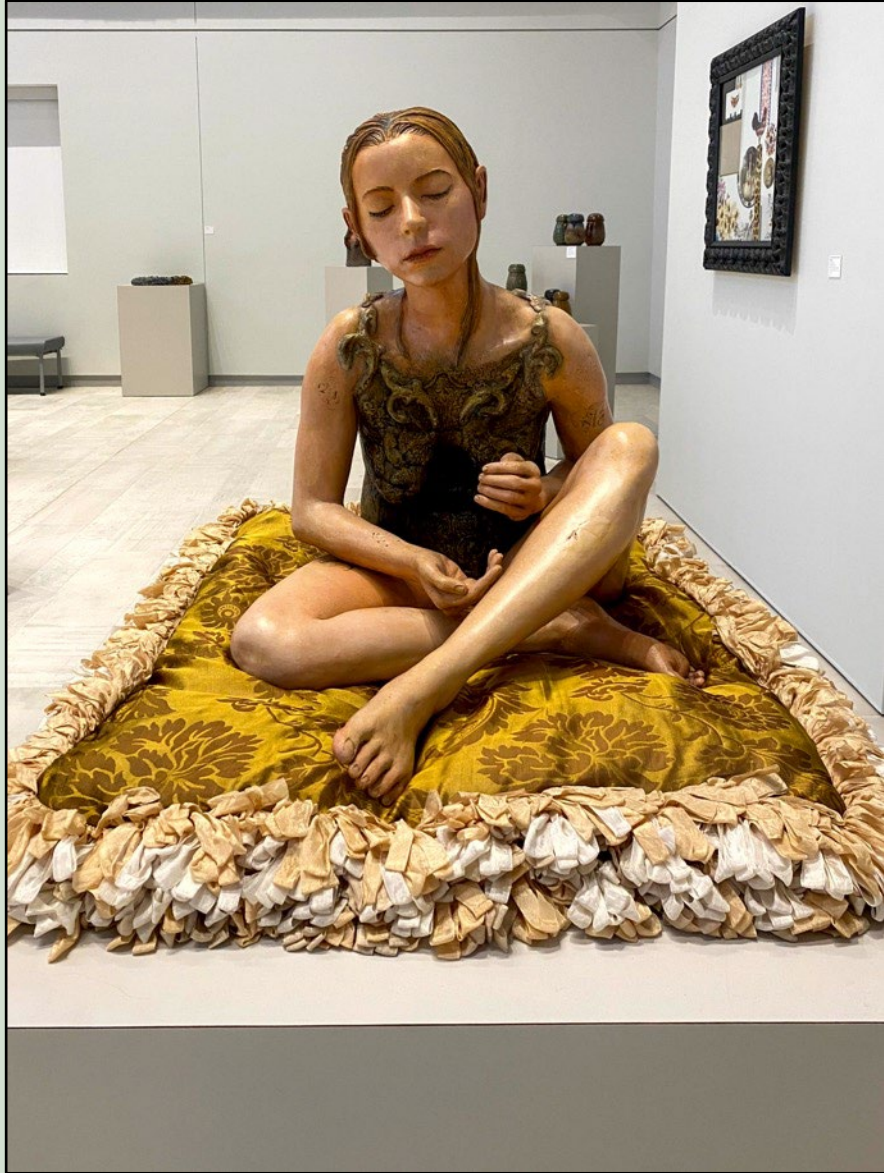
Linda Ganstrom

Fort Hays State University

Stoneware painted with Gold Fluid

Acrylic Washes seated on silk textiles







***Daddy Dropoff***

Scott Jones  
Wichita State University  
Stoneware with Hydro Dipped Decal  
14" x 13" x 10"  
2023





***Tea & Coffee | We are Still Hungry***

Nicholas Geankoplis, Ceramics Program Head  
Associate Professor, Department of Art,  
Kansas State University  
Artisan-sourced handmade porcelain tile,  
overglaze decals fired to 1361  
framed 24" x 24"





***Tea & Coffee | Skating to School on Frozen Canals***

Nicholas Geankoplis, Ceramics Program Head  
Professor, Department of Art,  
Kansas State University  
Artisan-sourced handmade porcelain tile,  
overglaze decals fired to 1361  
framed 24" x 24"



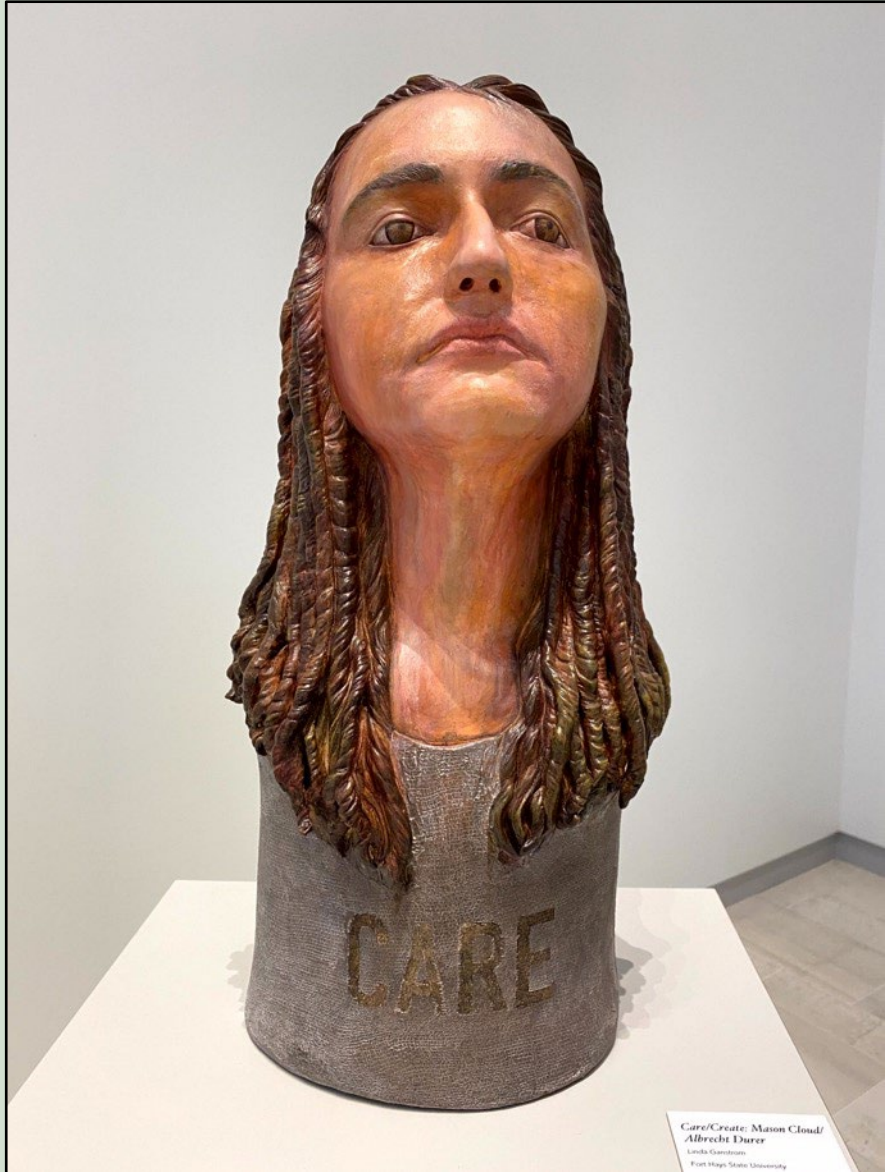
## *Series of Beetle Jars*

Rylie Hazelton  
Fort Hays State University  
Wheel-thrown stoneware, glaze  
8" x 4.5" x 4.5"









***Care/Create: Mason Cloud/Albrecht Durer***

Linda Ganstrom

Fort Hays State University

Porcelain painted with Golden Fluid Acrylics Washed

Care/Create: Mason Cloud/  
Albrecht Durer  
Linda Ganstrom  
Fort Hays State University



*Care/Crete: Mason Cloud/  
Albrecht Dürer*  
Linda Collins  
First Steps Studio University  
Porcelain painted with  
Acrylic

*Care/Crete: Mason Cloud/  
Albrecht Dürer*  
Linda Collins  
First Steps Studio University  
Porcelain painted with  
Acrylic







***Harvest Wreath: Winter***

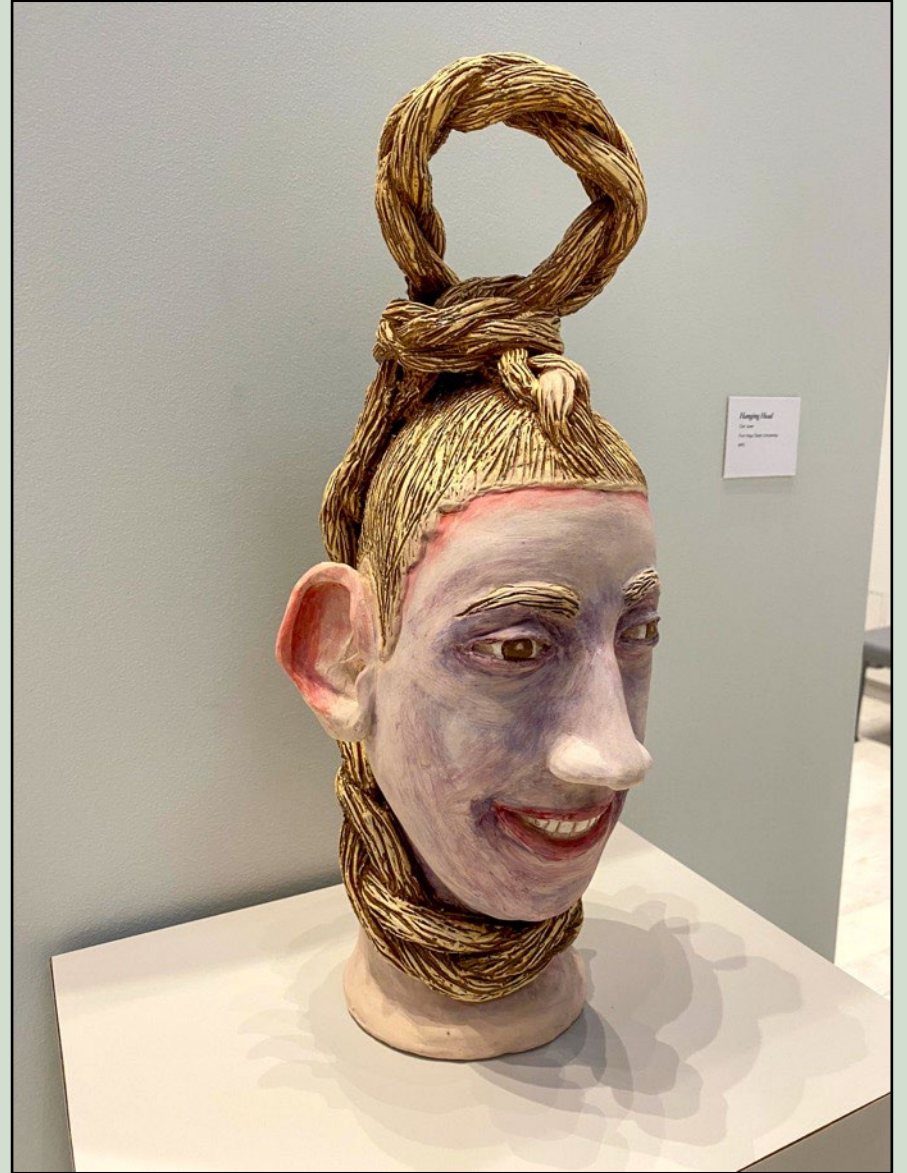
Sarah Gross  
University of Kansas  
Earthenware, glaze  
18.5" x 18.5" x 4.5"





***Hanging Head***

Cari Jean  
Fort Hays State University  
Ceramic





## ***Totally Opossum***

Dylan Seeney  
Fort Hays State University  
Stoneware, Copper Stain,  
Underglazes



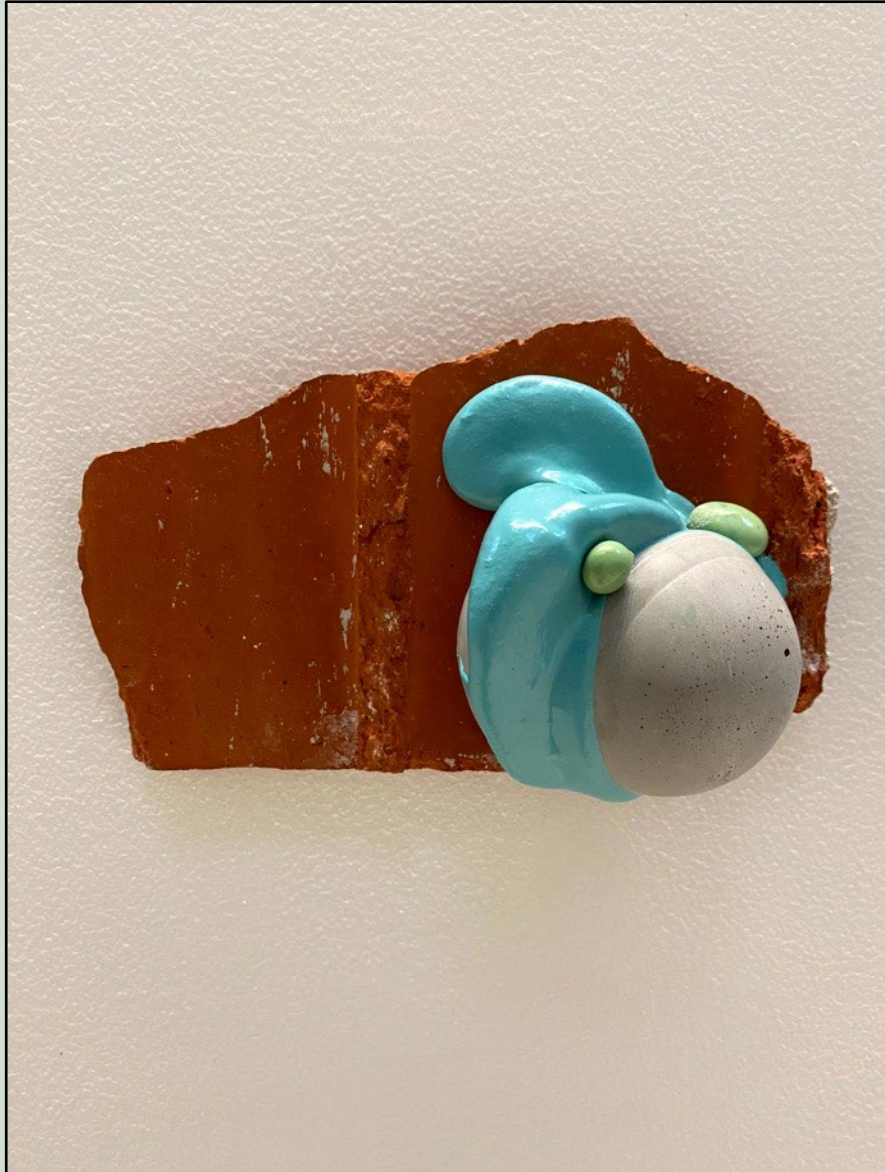


## *Cups*

Joe Meinecke  
University of Kansas  
Porcelain, Soda Fired  
2021







***Small Structure - 1***

Makenzie Burmeister  
Kansas State University  
Found Ceramic, Glaze, Cast Concrete,  
and Stained Epoxy

5"x7"x4"

2023





***Pink bottle***

Tommy Lomeli  
University of Kansas  
Stoneware, kandy paint, metal flake  
16"x8"x8"





## ***Sambandha***

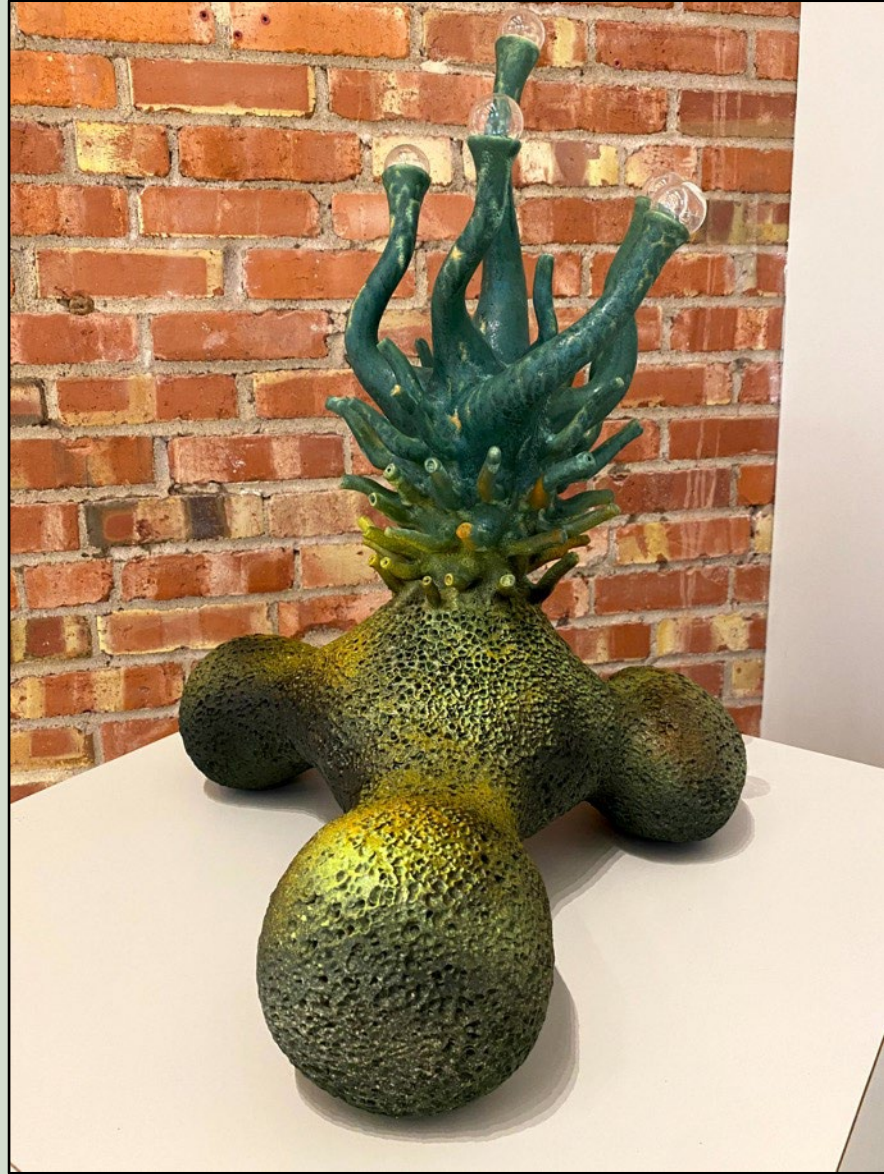
Tina Thomas  
Fort Hays State University  
Underglazes, Paints, and Stains  
24" x 14" x 8.5"





***Crescens De Petra***

Mark Freeman  
Fort Hays State University  
Stoneware, Glaze, Glass, Paint  
22" x 17" x 16"









***Wedding Vessel #16 (Arrangement)***

Justice Catron

Kansas State University

Wheel Thrown and Altered, Stoneware, cone10

Reduction, overglaze decals, Gold lusters

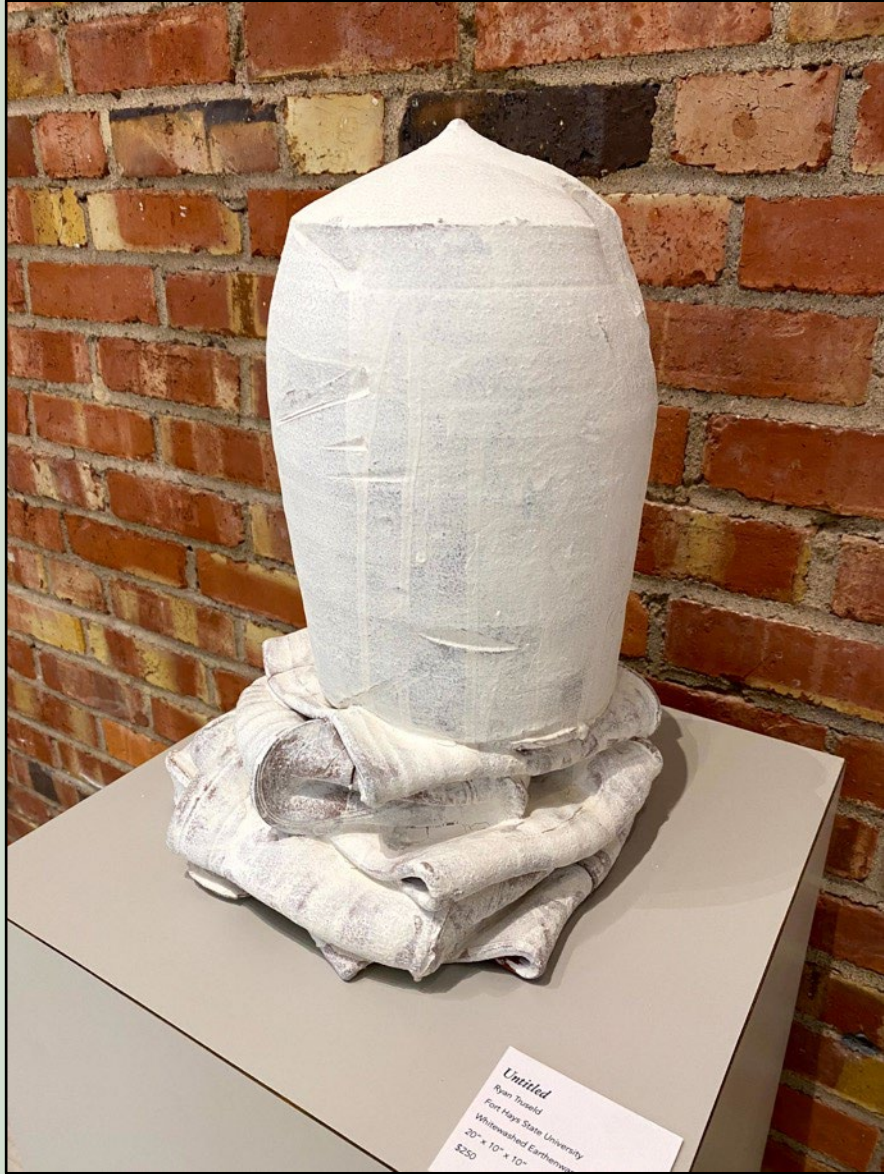




*Untitled*

Ryan Truseld  
Fort Hays State University  
Whitewashed earthenware  
2' x 10" x 10"

Untitled  
Ryan Truseld  
Fort Hays State  
Whitewashed  
20" x 10" x  
\$250

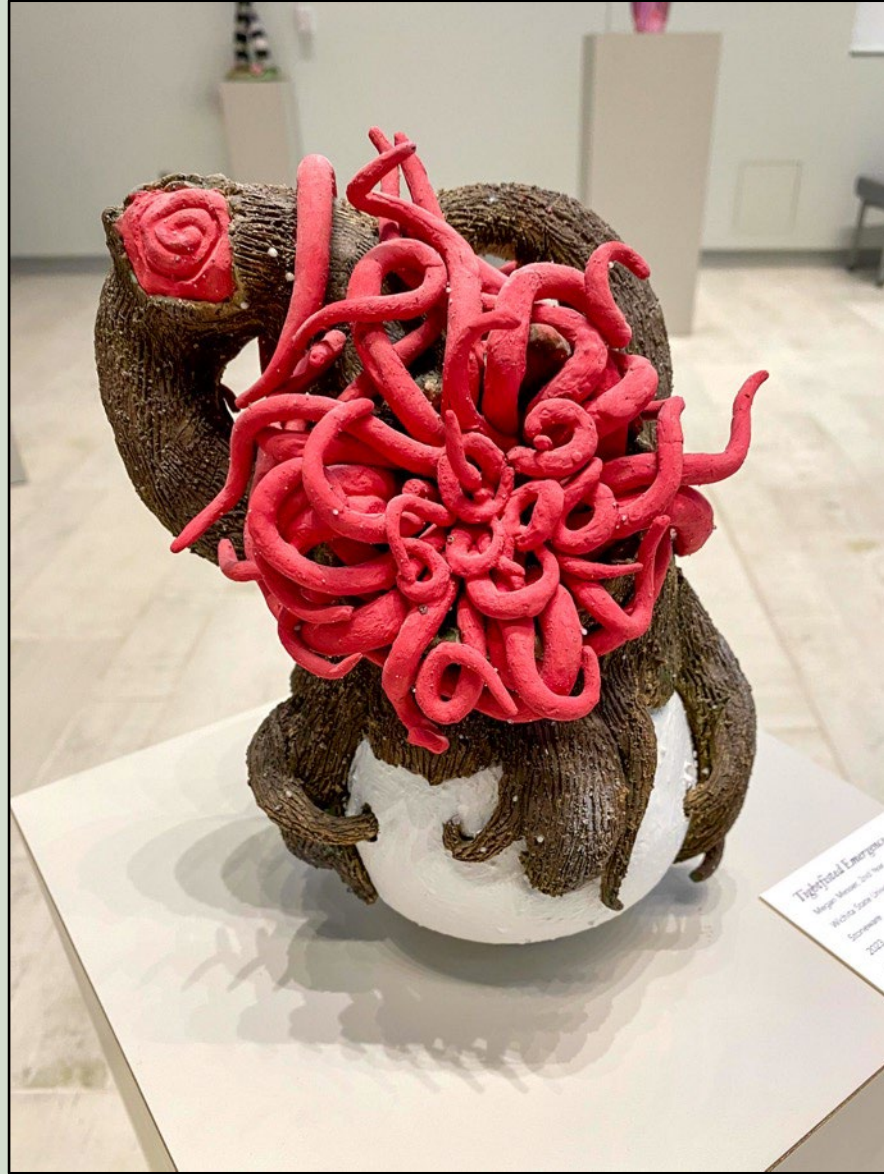




## ***Tightfisted Emergence***

Megan Messer, 2<sup>nd</sup> year  
Wichita State University  
Stoneware  
2023

Tightf  
Megan  
Wich  
St  
2





## ***Kandy Krater***

Tommy Lomeli

University of Kansas

Stoneware, aluminum, kandy paint, metal flake

20" x 16" x 14"









***Marsh - The Earth Sisters Series***

Sara Kimber  
Ceramic  
12" x 9.5" x 6"  
2023





***Falling - The Earth Sisters Series***

Sara Kimber

Ceramic

13" x 9.5" x 6"

2023



Earth Sisters Series  
Sara Kinber  
Fort Hays State University  
Raku, Glass, & Acrylic  
13" x 9.5" x 6"  
NPS



## *Spiral*

Kelly Chapin-Hagen  
Stoneware, Underglaze, Watercolor, and Pastel  
Cone 6 Reduction  
25" x 25" x 3"  
2023







## *Viridi Clavum Pila*

Mark Freeman

Fort Hays State University

Clay, Glaze, Wood, Mixed Media

12" x 9" x 6"





EXIT





***Estas Como Un Tanque de Gas  
(You're Sitting like a Gas Tank)***

Joanna Cardenas  
Fort Hays State University  
Stoneware and Mixed Media



***Estas Como Un Tanque de Gas  
(You're Sitting like a Gas Tank), No1***

Joanna Cardenas  
Fort Hays State University  
Stoneware and Mixed Media





***Estas Como Un Tanque de Gas  
You're Sitting like a Gas Tank), No 2***

Joanna Cardenas  
Fort Hays State University  
Stoneware and Mixed Media







***Estas Como Un Tanque de Gas  
(You're Sitting like a Gas Tank), No 3***

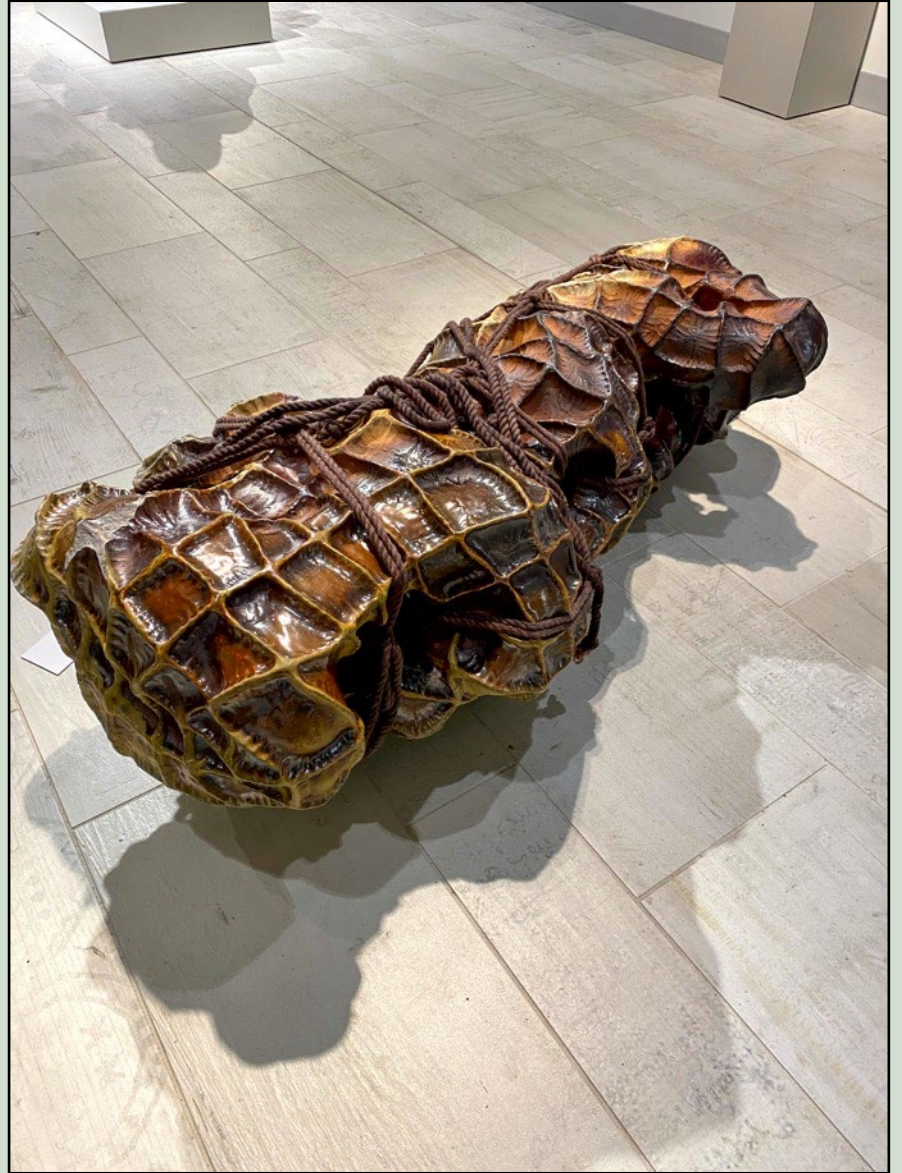
Joanna Cardenas  
Fort Hays State University  
Stoneware and Mixed Media





## ***Cradled***

Grace Tuthill  
University of Kansas  
Woodfired Ceramics, Rope  
48" x 24" x 19"









## ***Small Structure – 2***

Makenzie Burmeister  
Kansas State University  
Found Ceramic, Found Tile, Glaze, Silica  
Sand, Cast Concrete, and Stained Epoxy  
9" x 8" x 9"  
2023







***Shells, Seeds, and PTSD # 6  
(ACE Series)***

Jonah Simmons  
Fort Hays State University  
Ceramic  
10" x 10" x 7"  
2023





*Unnamed*

Grace Tuthill  
University of Kansas  
Woodfired Ceramics  
34" x 20" x 18"







## ***Yellow Structure***

Makenzie Burmeister  
Kansas State University  
Found Ceramic, Glaze, Black Penny  
Tile, Slate, and Stained Epoxy  
13" x 15" x 6"  
2023





***Impression series 23***

Marshall Maude  
University of Kansas  
Wood fired stoneware  
40" x 30" x 20"











***Dollhouse***

Grace Tuthill  
University of Kansas  
Woodfired Ceramics, Steel  
28" x 24" x 28"





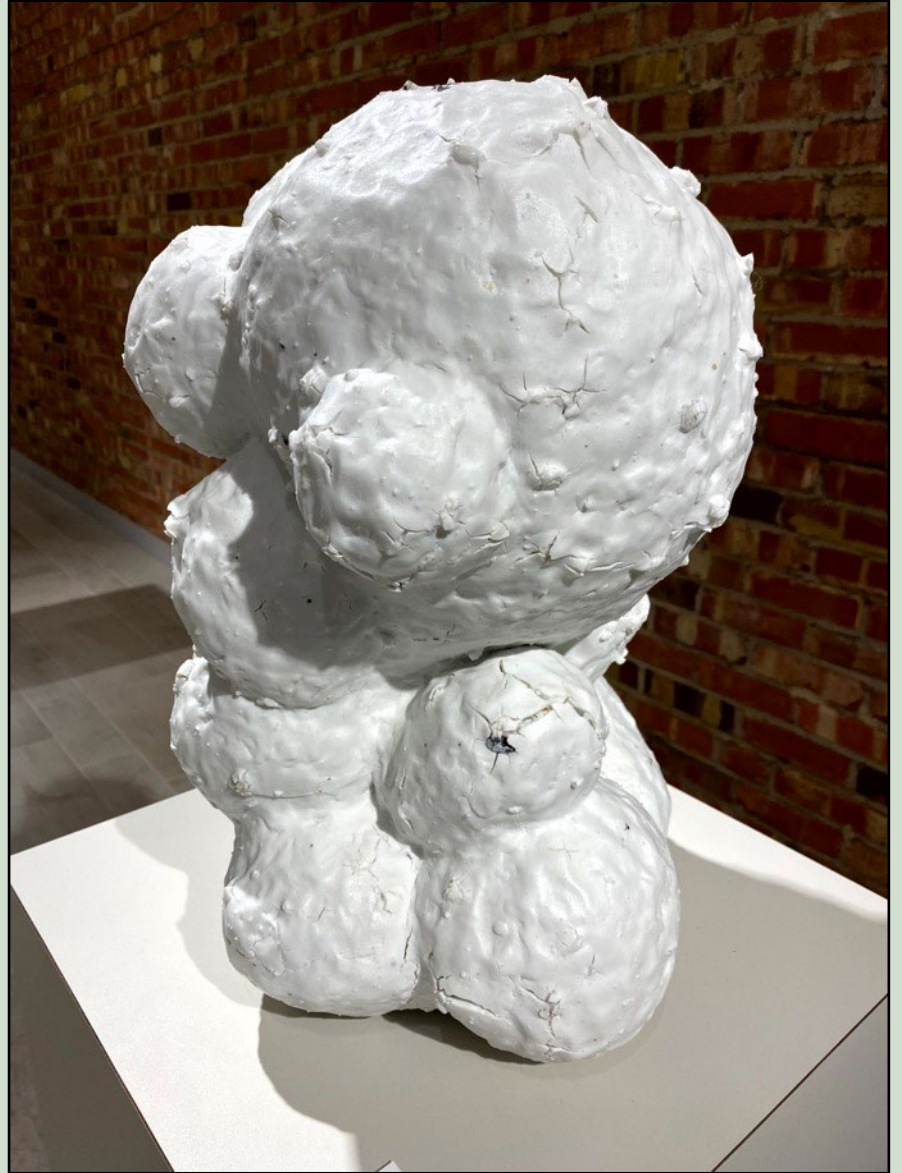




*Punctum (Vessel)*

Ted Adler, Professor  
Wichita State University  
Translucent porcelain, Feldspathic stones  
2023







## ***Bone & Shadow***

Holly Hendrick  
Fort Hays State University  
Ceramic, stains, and acrylics  
15" x 10" x 10"  
2023

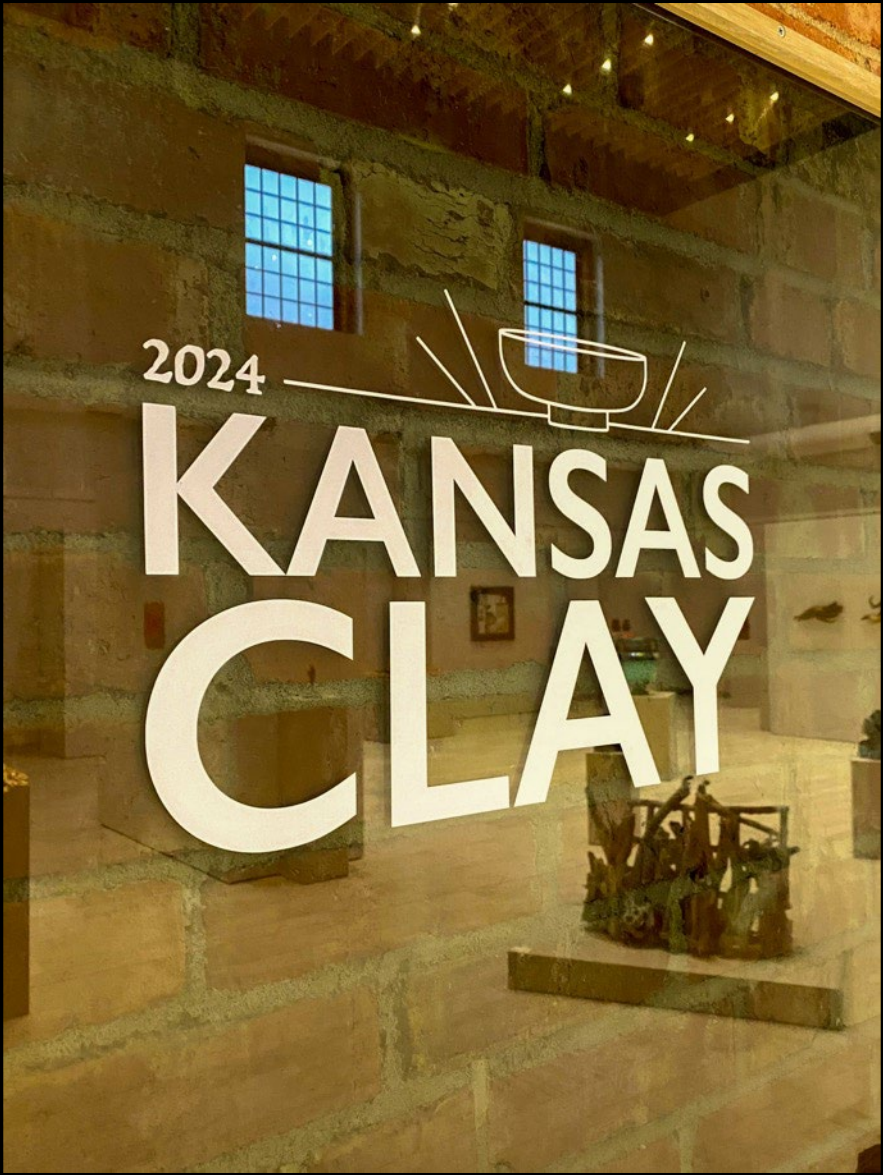






***Be Still: Quan Yin***

Linda Ganstrom  
Fort Hays State University  
Stoneware painted with Gold Fluid  
Acrylic Washes



MT

---

FORT HAYS STATE UNIVERSITY'S  
MOSS-THORNS  
GALLERY *of* ART

& The Patricia A. Schmidt Gallery Lobby